

# CANADA 1868 LARGE QUEEN ISSUE

TWO CENT **POSSIBLY** ON LAID PAPER



## CANADA'S RAREST STAMP

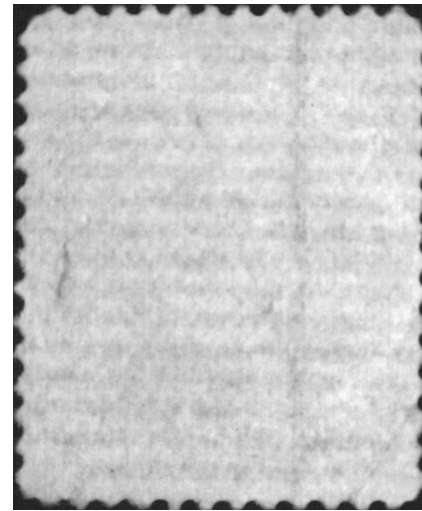
Expertization by Vincent Graves Greene Philatelic Research Foundation

# Expertization Challenge

- Certification of Laid Paper variety
- Two existing known copies certified 75 years ago
- Existing copies not easily available for comparison
- Necessity to be very analytical in examination of stamp on its own merits
- Insufficient to say “stamp does not feel right” if decision negative - must prove how created
- 12 aspects of stamp examined – good example of new analytical approach to expertization

# Laid Paper

- Issue is about a paper variety having horizontal laid lines



- Is this a genuine copy of the paper variety or a fake?

# Papers for Large Queen Issue

- Eight LQ values exist on 11 paper types over 1868-72
- Papers differ by thickness, texture, opaque vs. translucent, horizontal vs. vertical mesh, soft vs crisp affecting impression, watermarked, laid paper
- Two Cent printed on 9 different papers
- Laid paper exists on One, Two and Three Cent values
- Horizontal laid lines, but One and Three are different papers
- Two Cent laid paper said to be similar to One Cent paper
- Is it possible to fake a Two Cent laid paper copy from another genuine Two Cent paper type = Challenge for us?

# Submitted and Known Two Cent Copies



Submitted

Hamilton C.D.S



Known

Blue Registered



Known

2 Ring "5"

Submitted copy is not an **obvious** fake

# Paper & Its Mesh

- All paper has a “mesh” – it’s more or less distinct.
- Mesh appears vertical or horizontal to us.
- Large Queen stamps printed on damp paper.
- Paper shrinks across grain of mesh when drying.
- Vertically meshed stamps are taller and narrower.
- Horizontally meshed are shorter and wider.
- Difference in design is about .3mm to the outer edge of stamp.
- Size difference is critical and was checked on all paper types.

# Large Queen stamps on Laid Paper

- Three values exist on laid paper



- All have horizontal laid lines
- One and Two Cent are on thicker softer paper. Three Cent is on thinner, crisper paper.

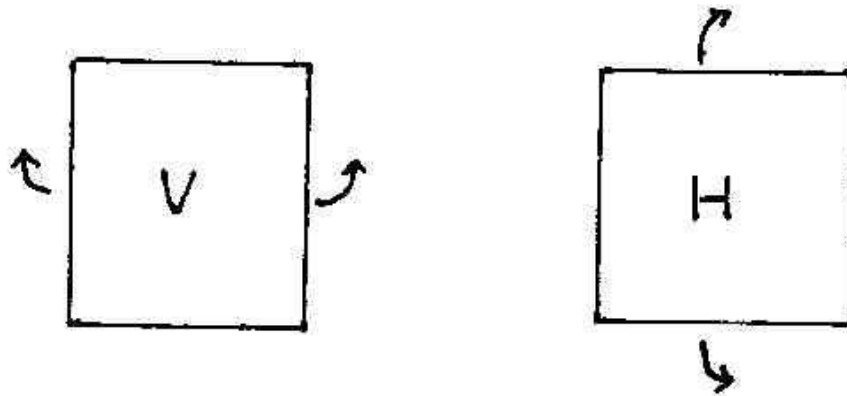
# Laid Paper Feature

- Laid line wires are added across the steel mesh or at right angles to flow of mesh and pulp.
- If paper appears vertically meshed to us then laid lines will be horizontal.
- LQ laid paper copies all have horizontal laid lines.
- Critical test for genuiness- potential laid paper copies must measure as a vertically meshed stamp. If they measure shorter and wider they are fake laid paper copies.
- If they measure taller and narrow they are possibly genuine.
- Submitted stamp does measure as a vertically meshed stamp.



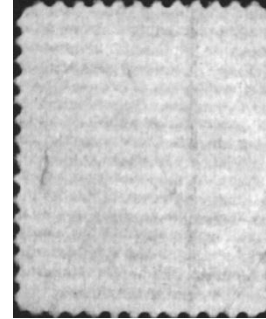
# Curl Test

- If moisture is applied by heavy breathing or soaking a stamp:
  - Sides curl on vertically meshed stamps
  - Top and bottom curl on horizontally meshed stamps



- Submitted stamp was soaked with a genuine One Cent Laid
- Sides curl on both stamps confirming V meshed for each

# Visibility of Laid Lines



- Clearly visible if placed in watermark fluid
- Usually visible on back without fluid
- Often visible on front as a shine if held at an angle to light
- Visibility from front is important - this is difficult to fake
- Lines on submitted stamp are visible in all 3 ways

# Rebacking

- Faked laid paper copies of One and Three cent values often are rebacked with a thin laid paper.
- Submitted stamp was soaked in water several times – it did not come apart!
- Under VSC6000 a rebacked One Cent laid showed evidence of a foreign substance in paper. Submitted stamp was clean.
- Rebacked stamps do not curl normally when soaked. Papers are different. They do not dry evenly.
- Submitted Two Cent was not rebacked to fake laid lines.

# Vertically Meshed Two Cent Papers

- Consider if laid lines could be carved in the paper of a genuine Two Cent vertically meshed stamp to fake the variety
- Need to also match paper thickness, texture and quality of impression on submitted stamp
- Submitted stamp is about .0036in. thick on fibrous softer paper, taking a strong but not crisp impression
- Three other vertically meshed papers exist for Two Cent:
  - thinner, about .0030in., semi-transparent, blurred print
  - thinner, about .0030in, coarse, design can bleed through
  - thicker, from .0030 to 35in., watermarked paper, strong coarse mesh, strong impression
- None match the submitted stamp

## Compare to One Cent Laid Paper

- Paper on 2 known copies has been compared to One Cent
- We compared submitted copy to a genuine One Cent Laid
- Under VSC6000 width of laid lines match at 13 per 2cm
- Paper colour is off-white for both
- Paper thickness is similar but One Cent is known to vary from copy to copy
- Under VSC6000 with high magnification paper texture and fibres matched
- Quality of impression is similar - strong, fine, but not crisp and precise as would occur on a smooth, tightly meshed paper
- Paper for One and Two Cent appear to be same

# Cancels on Submitted and Known Two Cent Laid

- Hamilton CDS, Mar 16, 1870 is almost too good, a bit later than assumed normal for laid paper usage



- REGISTERED cancel is common, blue used in Hamilton in Mar
- Two ring "5" is Hamilton



# Conclusion

- “Two Cent Large Queen stamp with Hamilton Mar 16, 1870 date stamp, on horizontal laid paper, about .0036in thick, is genuine. It has two diagonal creases and an internal tear”
- Reasons –
  - on vertically meshed paper, not rebacked, does not match any other Two Cent paper
  - matches paper used and impression quality for One Cent laid paper stamps
  - time of use and location suggests all three were from same sheet used in March 1870 in Hamilton